

COURSE BOOKLET 2026



**LEARNING
EMPOWERS
SUCCESS**



HANDS-ON, MINDS-ON, HEARTS-ON™ EDUCATION

Career-Ready,
Future-Ready
Courses

Authentic
Learning
Environment

Vibrant
Campuses

State-of-the-Art
Training
Facilities



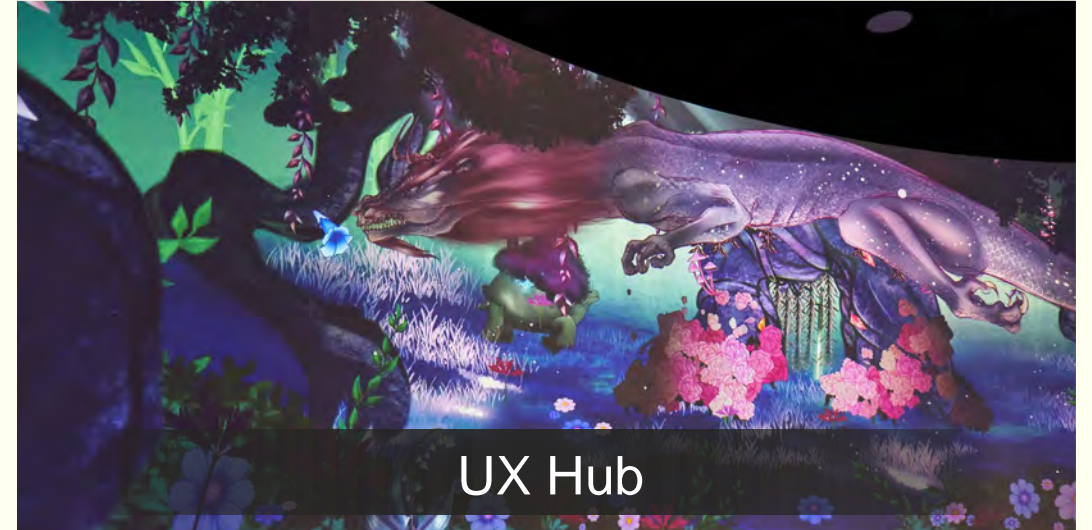
Explore many **possibilities**
that **excite!**



EXAMPLES OF AUTHENTIC LEARNING AT ITE COLLEGE CENTRAL



Aerospace Hub



UX Hub



Smart Manufacturing Hub



Retail Training Centre

EXAMPLES OF AUTHENTIC LEARNING AT ITE COLLEGE EAST



EXAMPLES OF AUTHENTIC LEARNING AT ITE COLLEGE WEST



OVERSEAS EXPOSURE PROGRAMMES



ITE enables students to expand their global perspectives in Asia and beyond!

- **Overseas Internship Programme:**
Gain work experience with international companies
- **Overseas Student Exposure Programme:**
Attend classes at institutions abroad
- **Overseas Service & Development Programme:**
Engage in community service projects, participate in international competitions, seminars, conferences, and leadership programmes



CO-CURRICULAR ACTIVITIES

Arts

Acoustic Pop Band
K-Pop Dance
Magic Club
Photography
Sand Animation
Visual Arts

Community

Care & repair club
Community service club
Rotaract club
Safe home club

Sports & Games

Archery
Cycling
Karate
Rock Climbing
Swimming
Volleyball

Leadership

Bridge Leaders
Peer Support Leaders
Student Council
Student Icons

Arts

3D Printing Club
Cyber Games Club
Entrepreneurship Club
Investment Club
Robotics Club

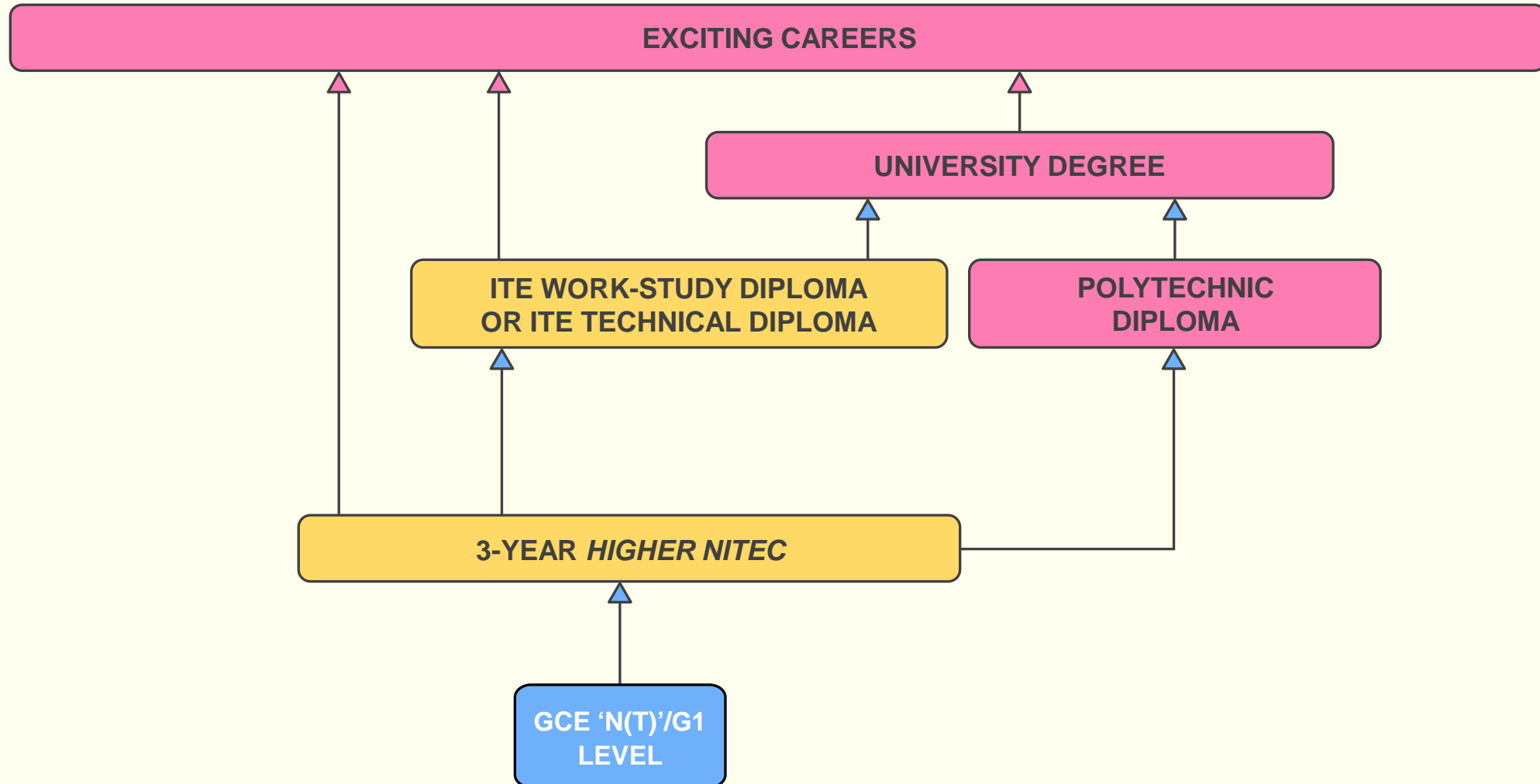
JUST SOME EXAMPLES!



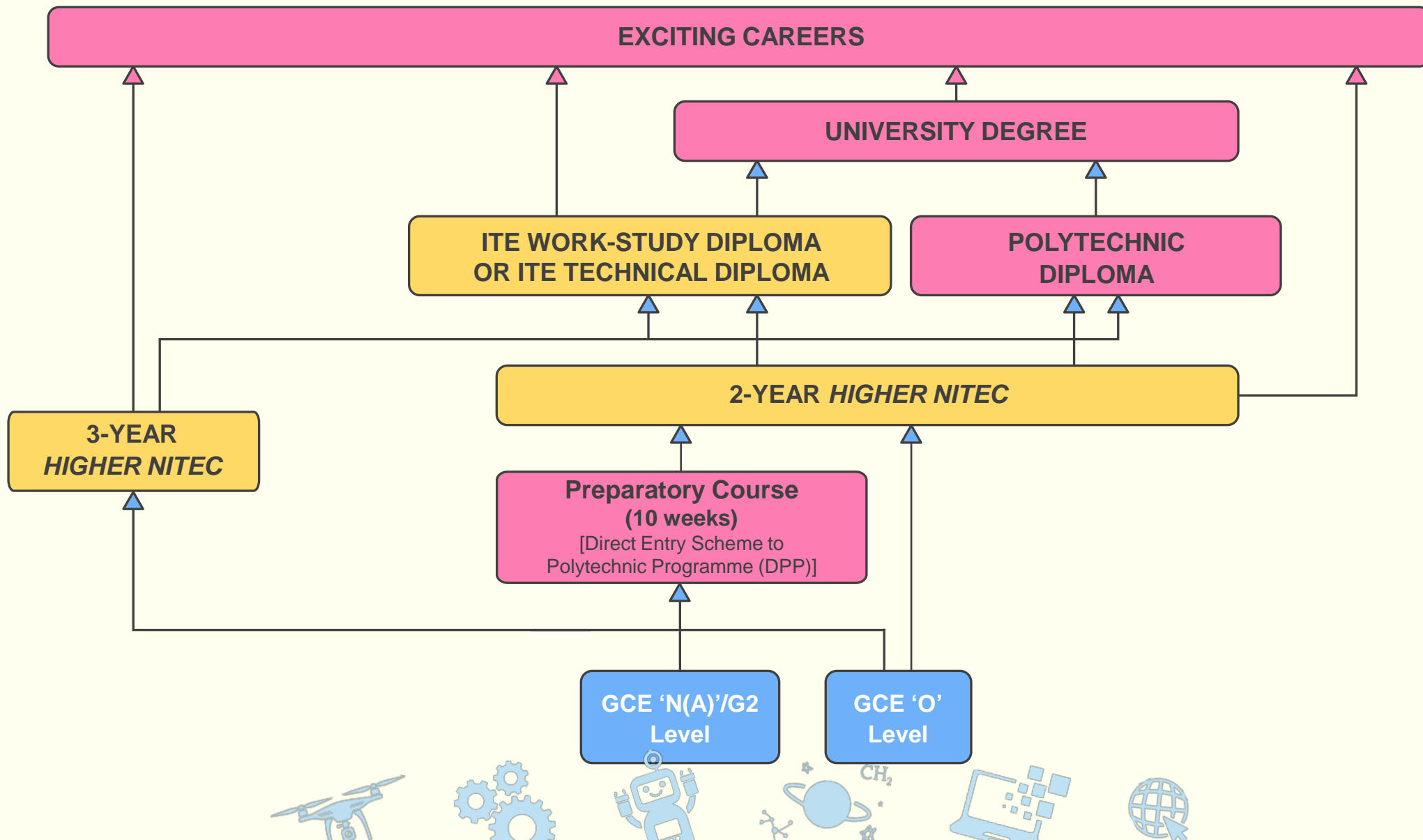


PROGRESSION PATHWAYS, **TRAINING** **PROGRAMMES AND** **COURSES**

PROGRESSION PATHWAYS



PROGRESSION PATHWAYS



EARLY ADMISSIONS EXERCISE (EAE)

Do you have a special talent or passion for a course in ITE?

Secure your place with us before your GCE 'N' or 'O' Level exams!

1

Apply for a course based on your aptitude and interest

2

Attend an interview and/or aptitude test, if selected

3

Receive a Conditional Offer for admission to ITE before your GCE 'N' or 'O' Level exams!

4

Meet the Minimum Entry Requirements of the course and you can join ITE



Scan to view
EAE video



My aspiration is to either become a sports management professional, a Karate athlete, or a Karate coach. To work towards this, I decided to apply for the EAE in *Higher Nitec* in Sport Management. This has allowed me to develop useful practical skills while attaining relevant theoretical knowledge such as in the area of sports science and coaching. I believe this has placed me in good stead for a fulfilling sports career!

Brylle Neo Ming Wei

Higher Nitec in Sport Management
ITE College East



EAE APPLICATION PROCESS

Application Late May

Submit your EAE application at www.ite.edu.sg (prepare write-up + supporting documents)

Selection & Interview Mid Jun to Mid Jul

Shortlisted applicants will have to undergo an interview and/or aptitude test

Offer & Acceptance Late Aug

1. Conditional offers will be given to successful applicants
2. Applicants are required to **accept** the offer within a specified period
3. Successful applicants will get a place in ITE as long as their GCE 'N' Level results meet the **Minimum Entry Requirements** of the course



(Apply at <https://www.ite.edu.sg/secondary-school-students/admissions/early-admissions-exercise-using-singpass>)

(View result at <https://istudent.ite.edu.sg>)

Refer to www.ite.edu.sg for the latest schedule



WHAT TO PREPARE FOR EAE APPLICATION

Submit Your Application Online

100-word write-up

- Why do you want to apply for the course?
- How are your talents and skills relevant to the course?

Provide relevant supporting documents

- Relevant certificates
- Sample works/portfolios (if any)
- Testimonials
- CCA records
- Others

Note:

You can apply for up to 3 *Higher Nitec* courses

If you are shortlisted...

Be prepared in your interview/aptitude test

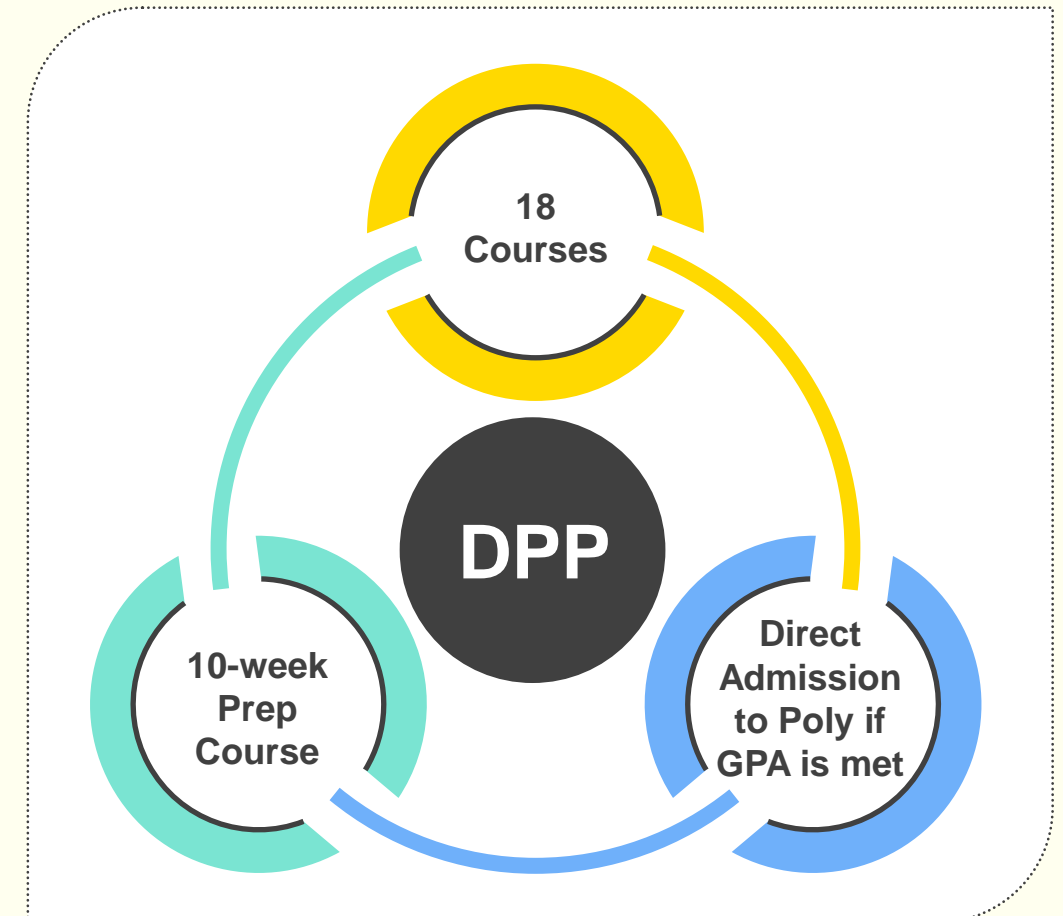
- Bring along your supporting documents
- Demonstrate good understanding of the course and industry
- Share your passion and interests related to the course



DPP – DIRECT ENTRY SCHEME TO POLYTECHNIC PROGRAMME

(2-Year *Higher Nitec*)

For Normal (Academic) Students



GPA – Grade Point Average



MINIMUM ENTRY REQUIREMENTS FOR DPP

Applied Sciences / Engineering / Info-Communications Technology

Minimum Entry Requirements

Grades 1 – 4 in English Language

Grades 1 – 4 in Mathematics

Grades 1 – 5 in three other subjects

Business & Services / Hospitality

Minimum Entry Requirements

Grade 1 – 3 in English Language

Grade 1 – 4 in Mathematics

Grade 1 – 5 in three other subjects

You need English + Maths + 3 Best Subjects \leq 19 points



Bio-Chemical
Technology



Civil & Structural
Engineering
Design



Electrical
Engineering



Accounting



Business
Administration



Event
Management



Electronics
Engineering



Mechanical
Engineering



Mechatronics
Engineering



Hospitality
Operations



Logistics &
Supply Chain
Management



Customer
Experience



Business
Information
Systems



Cyber & Network
Security



Immersive
Applications
& Games



Tourism



IT Applications
Development



IT Systems &
Networks



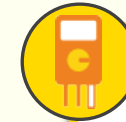
AGGREGATE POINTS FOR HEALTH SCIENCES / ENGINEERING / ELECTRONICS & INFO-COMM TECHNOLOGY



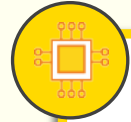
**Bio-Chemical
Technology**
7 (CE)



**Civil & Structural
Engineering Design**
10 (CE)



**Electrical
Engineering**
14 (CE) | 14 (CW)



**Electronics
Engineering**
13 (CC) | 14 (CE) | 14 (CW)



**Mechanical
Engineering**
12 (CC) | 14 (CE) | 14 (CW)



**Mechatronics
Engineering**
12 (CC) | 14 (CW)



**Business
Information Systems**
9 (CE)



**Cyber & Network
Security**
8 (CC) | 11 (CE) | 11 (CW)



**Immersive
Applications & Games**
9 (CC)



**IT Applications
Development**
10 (CC) | 11 (CE) | 11 (CW)



**IT Systems &
Networks**
11 (CC) | 12 (CE) | 11 (CW)

LEGEND

CC – College Central
CE – College East
CW – College West

The points reflected above are indicative cut off points from 2025 intake



AGGREGATE POINTS FOR BUSINESS & SERVICES, AND HOSPITALITY



Accounting

8 (CC) | 10 (CE) | 9 (CW)



Event Management

9 (CC)



Business Administration

9 (CC) | 10 (CE) | 7 (CW)



Hospitality Operations

11 (CW)



Logistics & Supply Chain Management

11 (CE)



Tourism

11 (CW)



Customer Experience

11 (CW)



Though I qualified for Secondary 5, I had doubts about my O-Level prospects. Encouraged by my parents to focus on my strengths, I explored my interest in IoT and engineering and chose ITE through the Direct-Entry Scheme to Polytechnic Programme (DPP) – a decision that changed my life.

Santos Rachael Ham
Higher Nitec in Electronics Engineering
ITE College Central

LEGEND

CC – College Central
CE – College East
CW – College West

The points reflected above are indicative cut off points from 2025 intake



MORE ON DPP

To secure direct entry into a relevant diploma programme at a polytechnic, you must satisfy the following eligibility requirements:

Higher Nitec Course	Progress to 1 st Year in relevant Polytechnic Diploma Course	Progress to 2 nd Year in relevant Polytechnic Diploma Course
Applied Sciences	ITE GPA \geq <u>2.5 points</u> (excluding CCA bonus points)	N.A.
Engineering and Info-Communications Technology	ITE GPA \geq <u>2.5 points</u> (excluding CCA bonus points)	ITE GPA \geq <u>3.5 points</u> (excluding CCA bonus points)
Business & Services	ITE GPA \geq <u>3.0 points</u> (excluding CCA bonus points)	N.A.



ITE PROGRAMMES

50

2-Year
Higher Nitec



49

3-Year
Higher Nitec



8

Technical
Diploma



45

Work-Study
Diploma



3-YEAR *HIGHER NITEC* PROGRAMME

FEATURES



Attain a
Higher Nitec
Qualification in 3
years



Gain exposure to modules
in their sector in Year 1
before specialising later



2 integrated internships –
3 months in Year 2 and
6 months in Year 3



My time at ITE was instrumental - it gave me the chance to challenge perspectives, grow alongside my peers, and discover my potential. Leading and being a voice for students who often go unheard means a great deal to me. I hope my journey inspires others to take charge of their story and be the light at the end of someone's tunnel.

Damien Koh Wen Hao
Higher Nitec in Sport Management
ITE College West



Scan to find
out more!



HOW TO COMPUTE YOUR AGGREGATE POINTS FOR 3-YEAR HIGHER NITEC COURSES WITH NORMAL (TECHNICAL) SUBJECTS

Normal (Technical) Grade	ITE Aggregate Points*
A	1
B	2
C	3
D	4
E/U	5

* A lower aggregate point is indicative of better performance

Type of Bonus Points	Number of Bonus Points Awarded
CCA Grades: 1) Excellent or Grades A1 – A2	2
2) Good or Grades B3 – C6	1



EXAMPLE OF AGGREGATE POINTS FOR A NORMAL (TECHNICAL) STUDENT

Normal (Technical) Results

Name: **Clare**

ENGLISH LANGUAGE	A
MATHEMATICS	A
DESIGN & TECHNOLOGY	B
SCIENCE	C
SOCIAL STUDIES	E
CCA GRADE	EXCELLENT

My Aggregate Points (based on best 4 subjects)

English Language: 1 point

Mathematics: 1 point

Design & Technology: 2 points

Science: 3 points

CCA Grade: 2 bonus points

Aggregate points:

1+1+2+3 – 2 bonus points

= 5 points



HOW TO COMPUTE YOUR AGGREGATE POINTS FOR 3-YEAR HIGHER NITEC COURSES WITH NORMAL (ACADEMIC) SUBJECTS

Normal (Academic) Grade	ITE Aggregate Points*
1, 2, 3	1
4	2
5	3
6/U	4

* A lower aggregate point is indicative of better performance

Type of Bonus Points	Number of Bonus Points Awarded
CCA Grades: 1) Excellent or Grades A1 – A2	2
2) Good or Grades B3 – C6	1



EXAMPLE OF AGGREGATE POINTS FOR A NORMAL (ACADEMIC) STUDENT

Normal (Academic) Results

Name: **Alex**

ENGLISH LANGUAGE	Grade 1
MATHEMATICS	Grade 2
ADDITIONAL MATHEMATICS	Grade 2
CHEMISTRY	Grade 3
PHYSICS	Grade 5
CCA GRADE	GOOD

My Aggregate Points (based on best 4 subjects)

English Language: 1 point

Mathematics: 1 point

Additional Mathematics: 1 point

Chemistry: 1 point

CCA Grade: 1 bonus points

Aggregate points:

1+1+1+1 – 1 bonus points

= 3 points



SUBJECT-BASED BANDING

<https://www.moe.gov.sg/microsites/psle-fsbb/full-subject-based-banding/secondary-school-experience.html>

**From 2028,
more post-secondary options
will be available.**

Students taking at least	POST-SEC PATHWAYS					
	ITE Year 1 Entry	ITE Year 2 Entry	Polytechnic Foundation Programme (PFP)	Polytechnic Year 1	Millennia Institute	Junior College
5 G3 subjects	✓	✓	NEW ✓	✓	✓	NEW ✓
4 G3 + 1 G2 subjects	✓	✓	NEW ✓	NEW ✓		
5 G2 subjects	✓	✓	✓			
4 G1 subjects	✓	NEW* ✓				

*Students who offer 4 G1 subjects will join Year 1 of Higher Nitec, and may be offered the accelerated pathway if they meet academic requirements during their Year 1 Semester 1 examinations. This pathway will allow them to attain a Higher Nitec in a shorter duration of about two years.



Information presented is accurate as of May 2025.

© Ministry of Education, Singapore. All Rights Reserved.

ITE DIPLOMAS (FOR ITE GRADUATES)

ITE OFFERS DIPLOMAS!

We have **two** types of Diploma programmes:
Work-Study Diploma and **Technical Diploma**

Our Diplomas fulfil the aspirations of our graduates for academic and career progression.

Students particularly value the **hands-on training** offered by these Diplomas, and our graduates experience **strong employment prospects**, with opportunities to **continue their education** at local universities.



WHY ITE DIPLOMAS?

WORK-STUDY DIPLOMA (WSDIP)

- 2.5 to 3-year apprenticeship-based programme for WSDIP
- Curriculum co-designed with industry
- Earn a competitive starting salary and enjoy employee benefits
- Deepen skills through structured workplace learning and mentorship
- Get a fully-sponsored and nationally-recognised Diploma
- Opportunity for further academic progression
- Sign-on incentive of \$5,000*
- \$10,000 CPF Ordinary Account top-up (ITE Progression Award)

TECHNICAL DIPLOMA (TD)

- 2 to 2.5 years of full-time study
- Curriculum co-designed with leading international Vocational Training and Education institutions
- Overseas learning experience in France, Germany, Hong Kong or Switzerland (depending on the course of study)
- Jointly certified by ITE and the partner institution
- Opportunity for further academic progression
- \$10,000 CPF Ordinary Account top-up (ITE Progression Award)
- \$5,000 into Post-Secondary Education Account (PSEA)

* For fresh ITE graduates from relevant feeder courses who are Singapore Citizens and within three years of their graduation or Operationally Ready Date. Terms and conditions apply.



ITE Technical Diploma (International Partners)



Technical Diploma in Culinary Arts with Restaurant Management



“ The journey has been both challenging and rewarding, and I’ve learned so much from my lecturers, peers, and family who have supported me. I’m excited to make a positive impact in the beauty industry and inspire others to pursue their passions, too.

Nurul Huda Binti Mohamed Azhar

Technical Diploma in
Beauty & Wellness Management
ITE College East



Technical Engineer Diploma in Automotive Engineering
Technical Engineer Diploma in Machine Technology
Technical Engineering Diploma in Electrical Engineering
(Clean Energy)



Vocational Training Council

Technical Diploma in Beauty & Wellness Management
Technical Engineer Diploma in Civil & Structural Engineering
Technical Diploma in Health & Exercise Coaching



Technical Diploma in Hospitality & Hotel Management



ITE WORK-STUDY DIPLOMAS



I was able to **gain practical experience** while pursuing my studies, essentially starting my career even before I graduated. It provided me with a balance of theory and application, **setting a strong foundation for my career.**

Dinesh Anbalagan
Work-Study Diploma in IT System Integration
ITE College West



To stay relevant and attract younger customers, you need younger talents. The Work-Study Diploma programme **helps us achieve this by providing fresh talents.** Working with ITE has been a **fantastic experience. There is strong support and training guidelines to help us,** and we get suitable candidates each time!

Ms Irene Ooi
Director
Nam Ho Travel



**Scan to find
out more!**



LIST OF WORK-STUDY DIPLOMAS

BUSINESS SECTOR

Accountancy
Airport Operations
Community Engagement & Development
Culinary Arts & Management
Customer Experience Management (Aviation Services)
Customer Experience Management (Cabin Services)
Customer Experience Management (Lifestyle & Consumer)
E-Commerce & Retail
Event Management
Fitness Management
Hotel & Restaurant Management
Human Resource Management
Lifestyle & Recreation Management
Patient Management & Services
Security Operations
Tourism Management
Integrated Supply Chain Management (Logistics) NEW
Integrated Supply Chain Management (Wholesale Trade) NEW

ENGINEERING SECTOR

Advanced Manufacturing
Agriculture & Aquaculture Technology
Aircraft Cabin Engineering
Aircraft Engine Maintenance
Aircraft Maintenance Engineering
Arboriculture & Horticulture
Automation Engineering
Chemical Process Technology
Electrical Engineering
Land Transport Engineering (Rail)
Land Transport Engineering (Operations Management)
Land Transport Engineering (Vehicle)
Marine & Offshore Engineering (Production)
Mechanical Systems Engineering
Microelectronics (Equipment)
Microelectronics (Process)
Port Automation Technology (in-service only)
Security Systems Engineering

INFORMATION & DIGITAL SECTOR

Cloud Management & Operations (Infrastructure Support)
Cyber Security & Forensics
Data Centre Infrastructure & Operation
Electronics & Computer Engineering (Applied Electronics & AI)
Electronics & Computer Engineering (IoT & Data Engineering)
IT System Integration

HEALTH SCIENCE SECTOR

Nursing (in-service only)
Opticianry
Paramedicine
Rehabilitation Care

HUMANITIES & SOCIAL SCIENCES SECTOR

Community Care Integration & Management

ARTS, DESIGN & MEDIA SECTOR

Media Communication & Digital Marketing

BUILT ENVIRONMENT SECTOR

Architectural BIM & Design
Facilities Management
Mechanical & Electrical Services Supervision
Vertical Transportation

Over **40** WSDip Courses
across 7 Sectors!





**SCHOOL OF
HEALTH
SCIENCES**

ONLY AT ITE COLLEGE EAST

3-YEAR <i>HIGHER NITEC</i> COURSE	MINIMUM ENTRY REQUIREMENTS
Community Care & Social Services	3 GCE 'N' Passes (Grade A-D or Grade 1-5) in Mathematics or Science* and two other subjects <i>Note: *Mobile Robotics, Smart Electrical Technology, IoT Applications, Mechanical Design & Automation, and Mobile Web Applications subjects Can be used in lieu of Science for admission to these courses.</i> OR 2 GCE 'O' Grades (Grade 1 to 8) in any two subjects
Opticianry	
Nursing	3 GCE 'N' Passes (Grade A-D or Grade 1-5) in English Language, Mathematics and one other subject OR 2 GCE 'O' Grades (Grade 1 to 8) in any two subjects



3-YEAR *HIGHER NITEC* COURSES AGGREGATE POINTS (2026 intake)

Based on Best 4 GCE 'N' Level subjects, including pre-requisite subjects and bonus points[^].

3-Year <i>Higher Nitec</i> Course	Aggregate Points
Health Sciences (CE)	
Community Care & Social Service	6
Opticianry	6
Nursing	13

CE – College East

[^] Pre-requisite subjects: Subjects that are compulsory to pass in order to qualify for a course | Bonus points: CCA bonus points



A group of four people, two men and two women, are gathered around a display. The two men are standing and looking at the display, while the two women are kneeling and interacting with a small yellow robot. The background features a large screen with various icons and text related to logistics and technology.

SCHOOL OF BUSINESS & SERVICES

Hands-free
Wearables

Robots

Data

**LOGISTICS
SOLUTIONS**
Supply chain
planning, design
and engineering to
optimise transport,
inventory management
and service quality



Anticipatory Logistics
Using predictive algo
rithms to enhance
efficiency and enhance
network utilisation

3-Year <i>Higher Nitec</i> Course	College			Minimum Entry Requirements
	Central	East	West	
Accounting	✓	✓	✓	3 GCE 'N' Level Passes: Grade A-D or Grade 1-5 in English Language and two other subjects OR 2 GCE 'O' Level Grades: Grade 1-8 in any two subjects <i>Note for Sport Management: Applicants are required to clear a pre-entry medical check-up</i>
Business Administration	✓	✓	✓	
Event Management	✓			
Passenger Services	✓	✓		
Sport Management	✓	✓	✓	
Tourism			✓	
Customer Experience			✓	
Beauty & Wellness Management		✓		Completed GCE 'N' or GCE 'O' Level <i>Note for Beauty & Wellness Management: Applicants are required to clear a pre-entry medical check-up</i>
Hairdressing & Salon Management		✓		
Logistics & Supply Chain Management		✓		
Retail & Online Business	✓	✓	✓	



3-YEAR *HIGHER NITEC* COURSES AGGREGATE POINTS (2026 intake)

Based on Best 4 GCE 'N' Level subjects, including pre-requisite subjects and bonus points[^].

3-Year <i>Higher Nitec</i> Course	Aggregate Points
Business & Services	
Accounting	5 (CC) 6 (CE) 6 (CW)
Business Administration	3 (CC) 4 (CE) 3 (CW)
Event Management	5 (CC)
Passenger Services	5 (CC) 8 (CE)
Sport Management	4 (CC) 5 (CE) 6 (CW)
Tourism	7 (CW)
Customer Experience	9 (CW)
Beauty & Wellness Management	5 (CE)
Hairdressing & Salon Management	6 (CE)
Logistics & Supply Chain Management	9 (CE)
Retail & Online Business	5 (CC) 7 (CE) 7 (CW)

CC – College Central / CE – College East / CW – College West

[^] Pre-requisite subjects: Subjects that are compulsory to pass in order to qualify for a course | Bonus points: CCA bonus points



**SCHOOL OF
DESIGN &
MEDIA**

ONLY AT ITE COLLEGE CENTRAL

3-Year <i>Higher Nitec</i> Course	Minimum Entry Requirements
Technical Theatre & Production	Completion of GCE 'N' or 'O' Levels <i>Note: Applicants for these courses must ensure that they are free from colour appreciation deficiency.</i>
Film & Video Production	
Communication Design	
Interior & Product Design	
Visual Merchandising	



3-YEAR *HIGHER NITEC* COURSES AGGREGATE POINTS (2026 intake)

Based on Best 4 GCE 'N' Level subjects, including pre-requisite subjects and bonus points[^].

3-Year <i>Higher Nitec</i> Course	Aggregate Points
Design & Media (CC)	
Communication Design	3 (CC)
Film & Video Production	3 (CC)
Interior & Product Design	4 (CC)
Technical Theatre & Production	3 (CC)
Visual Merchandising	3 (CC)

CC – College Central

[^] Pre-requisite subjects: Subjects that are compulsory to pass in order to qualify for a course | Bonus points: CCA bonus points





SCHOOL OF ELECTRONICS & INFO-COMM TECHNOLOGY

3-Year <i>Higher Nitec</i> Course	College			Minimum Entry Requirements
	Central	East	West	
AI Applications	✓		✓	3 GCE ‘N’ Level Passes: Grade A-D or Grade 1-5 in Mathematics or Science* and two other subjects <i>Note:</i> *Mobile Robotics, Smart Electrical Technology, IoT Applications, Mechanical Design & Automation, and Mobile Web Applications subjects can be used in lieu of Science for admission to these courses. OR 2 GCE ‘O’ Level Grades: Grade 1-8 in any two subjects <i>Note for Electronics Engineering: Applicants for this course must ensure that they are free from colour appreciation deficiency.</i>
Business Information Systems		✓		
Cyber & Network Security	✓	✓	✓	
Data Engineering			✓	
Electronics Engineering	✓	✓	✓	
Immersive Applications & Game	✓			
IT Applications Development	✓	✓	✓	
IT Systems & Networks	✓	✓	✓	
Operational & Information Technology			✓	
Security System Integration		✓	✓	Completed GCE ‘N’ or GCE ‘O’ Level <i>Note: Applicants for this course must ensure that they are free from colour appreciation deficiency.</i>



3-YEAR *HIGHER NITEC* COURSES AGGREGATE POINTS (2026 intake)

Based on Best 4 GCE 'N' Level subjects, including pre-requisite subjects and bonus points^.

3-Year <i>Higher Nitec</i> Course	Aggregate Points
Electronics & Info-Comm Technology	
AI Applications	4 (CC) 5 (CW)
Business Information Systems	9 (CE)
Cyber & Network Security	4 (CC) 7 (CE) 7 (CW)
Data Engineering	8 (CW)
Electronics Engineering	8 (CC) 17 (CE) 16 (CW)
Immersive Applications & Game	3 (CC)
IT Applications Development	5 (CC) 11 (CE) 13 (CW)
IT Systems & Networks	6 (CC) 15 (CE) 11 (CW)
Operational & Information Technology	11 (CW)
Security System Integration	9 (CE) 12 (CW)

CC – College Central / CE – College East / CW – College West

^ Pre-requisite subjects: Subjects that are compulsory to pass in order to qualify for a course | Bonus points: CCA bonus points





**SCHOOL OF
ENGINEERING**

3-Year <i>Higher Nitec</i> Course	College			Minimum Entry Requirements
	Central	East	West	
Applied Food Science		✓		3 GCE 'N' Level Passes: Grade A-D or Grade 1-5 in Mathematics or Science* and two other subjects <i>Note:</i> <i>*Mobile Robotics, Smart Electrical Technology, IoT Applications, Mechanical Design & Automation, and Mobile Web Applications subjects can be used in lieu of Science for admission to these courses.</i> OR 2 GCE 'O' Level Grades: Grade 1- 8 in any two subjects <i>Note for Architectural Technology, Applied Food Science and Chemical Process Technology: Applicants must ensure that they do not have colour appreciation deficiency</i>
Bio-Chemical Technology		✓		
Chemical Process Technology		✓		
Architectural Technology		✓		
Integrated Mechanical & Electrical Design		✓		
Civil & Structural Engineering Design		✓		



3-Year <i>Higher Nitec</i> Course	College			Minimum Entry Requirements
	Central	East	West	
Landscape Management & Design		✓		Completion of GCE 'N' or 'O' Levels <i>Note: Applicants for this course must ensure that they do not have colour appreciation deficiency.</i>
Facilities Management & Engineering		✓	✓	
Vertical Transportation		✓		
Electrical Engineering		✓	✓	3 GCE 'N' Level Passes: Grade A-D or Grade 1-5 in Mathematics and two other subjects OR 2 GCE 'O' Level Grades: Grade 1-8 in any two subjects <i>Note: Applicants must ensure that they do not have colour appreciation deficiency</i>



3-Year <i>Higher Nitec</i> Course	College			Minimum Entry Requirements
	Central	East	West	
Advanced Manufacturing <small>NEW</small>	✓			3 GCE 'N' Level Passes: Grade A-D or Grade 1-5 in Mathematics or Science and two other subjects OR 2 GCE 'O' Level Grades: Grade 1-8 in any two subjects Note: *Mobile Robotics, Smart Electrical Technology, IoT Applications, Mechanical Design & Automation, and Mobile Web Applications subjects can be used in lieu of Science for admission to these courses.
Aerospace Engineering <small>NEW</small>	✓			
Marine & Offshore Engineering <small>NEW</small>	✓			
Mechatronics Engineering <small>NEW</small>	✓		✓	
Rapid Transit Engineering <small>NEW</small>			✓	
Automotive Engineering <small>NEW</small>			✓	Completion of GCE 'N' or 'O' Levels
Mechanical Engineering <small>NEW</small>	✓	✓	✓	



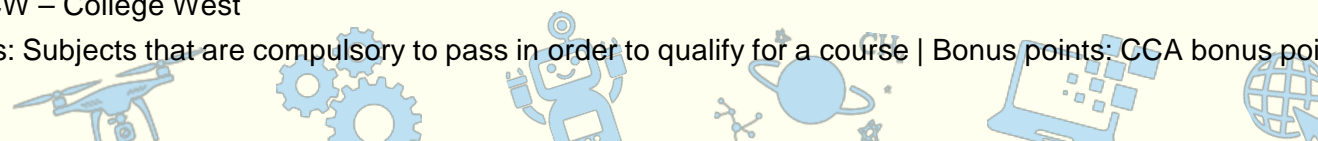
3-YEAR *HIGHER NITEC* COURSES AGGREGATE POINTS (2026 intake)

Based on Best 4 GCE 'N' Level subjects, including pre-requisite subjects and bonus points[^].

3-Year <i>Higher Nitec</i> Course	Aggregate Points
Engineering	
Applied Food Science	7 (CE)
Bio-Chemical Technology	3 (CE)
Chemical Process Technology	11 (CE)
Architectural Technology	4 (CE)
Civil & Structural Engineering Design	6 (CE)
Integrated Mechanical & Electrical Design	15 (CE)
Facilities Management & Engineering	15 (CE) 12 (CW)
Landscape Management & Design	9 (CE)
Vertical Transportation	13 (CE)
Electrical Engineering	16 (CE) 11 (CW)

CE – College East / CW – College West

[^] Pre-requisite subjects: Subjects that are compulsory to pass in order to qualify for a course | Bonus points: CCA bonus points



3-YEAR *HIGHER NITEC* COURSES AGGREGATE POINTS (2026 intake)

Based on Best 4 GCE 'N' Level subjects, including pre-requisite subjects and bonus points[^].

3-Year <i>Higher Nitec</i> Course	Aggregate Points
Engineering	
Advanced Manufacturing <small>NEW</small>	New
Aerospace Engineering <small>NEW</small>	New
Marine & Offshore Engineering <small>NEW</small>	New
Mechatronics Engineering <small>NEW</small>	New
Rapid Transit Engineering <small>NEW</small>	New
Automotive Engineering <small>NEW</small>	New
Mechanical Engineering <small>NEW</small>	New

[^] Pre-requisite subjects: Subjects that are compulsory to pass in order to qualify for a course | Bonus points: CCA bonus points





**SCHOOL OF
HOSPITALITY**



ONLY AT ITE COLLEGE WEST

3-Year <i>Higher Nitec</i> Course	Minimum Entry Requirements
Culinary Arts	Completion of GCE 'N' or 'O' Levels <i>Note: Applicants are required to clear a pre-entry medical check-up</i>
Pastry & Baking	3 GCE 'N' Passes: Grade 1-5 or Grade A-D in English and two other subjects or two GCE 'O' Grades 1-8 in any two subjects
Hospitality Operations	<i>Note: Applicants are required to clear a pre-entry medical check-up</i>



3-YEAR *HIGHER NITEC* COURSES AGGREGATE POINTS (2026 intake)

Based on Best 4 GCE 'N' Level subjects, including pre-requisite subjects and bonus points[^].

3-Year <i>Higher Nitec</i> Course	Aggregate Points
Hospitality (CW)	
Hospitality Operations	6 (CW)
Pastry & Baking	3 (CW)
Culinary Arts	6 (CW)

CW – College West

[^] Pre-requisite subjects: Subjects that are compulsory to pass in order to qualify for a course | Bonus points: CCA bonus points



TIMELINE OF EVENTS

Release of
GCE 'N' Level
results
(*Mid Dec*)

Application period:
5 calendar days
from day of results
release

DPP application
for Normal
(Academic) students

Release of Course
interview details
(*Late Dec*)

Check application
results and decide
whether to accept
the offer

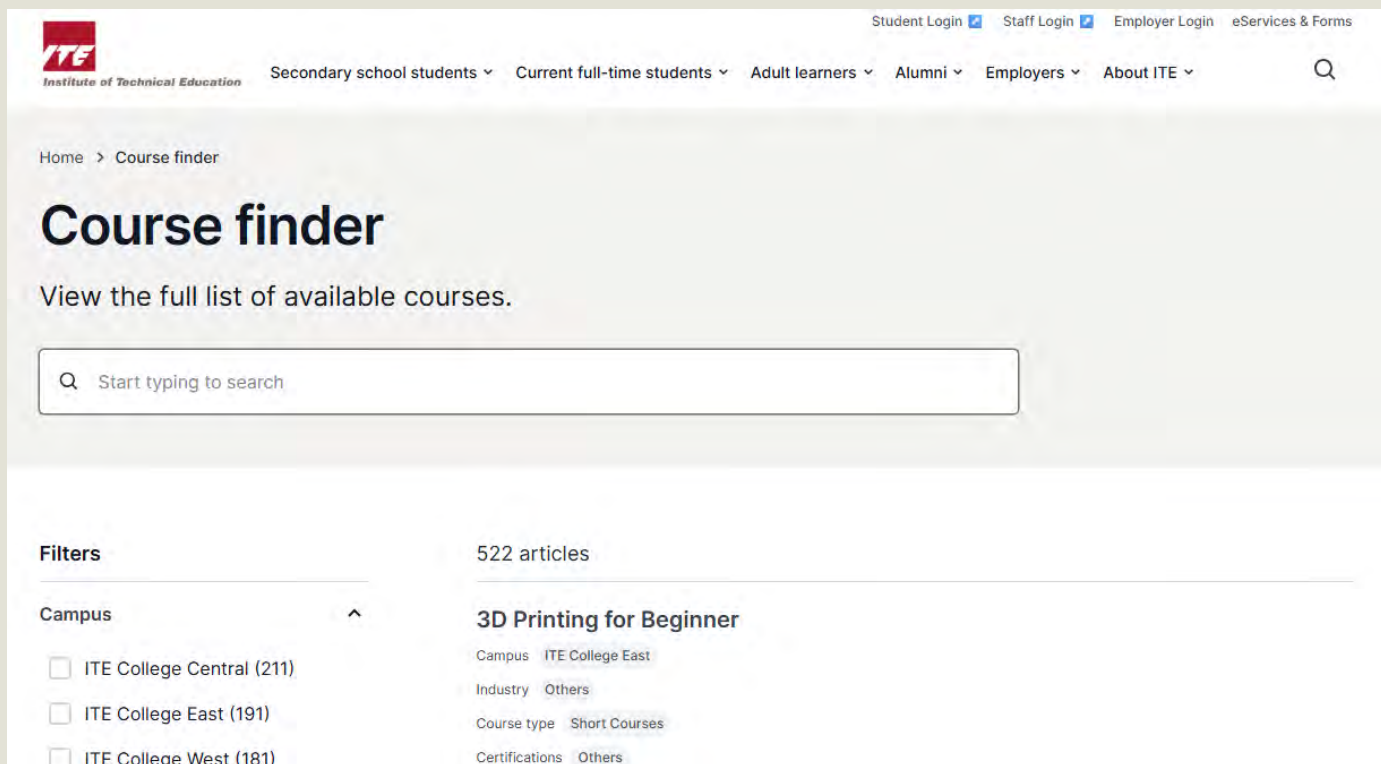
Report to your
posted College
and start your
course (*Early Jan*)

DPP students will
begin their 10-week
preparatory course in Jan,
thereafter they would
embark on
their *Higher Nitec*
course in April



CHECK OUT OUR ITE COURSE FINDER

Located at <https://www.ite.edu.sg/course-finder>



The screenshot shows the ITE Course Finder website. At the top, there's a navigation bar with the ITE logo and links for Student Login, Staff Login, Employer Login, and eServices & Forms. Below this, a secondary navigation bar lists user types: Secondary school students, Current full-time students, Adult learners, Alumni, Employers, and About ITE. The main heading is 'Course finder' with a subtext 'View the full list of available courses.' A search bar with the placeholder 'Start typing to search' is present. On the left, a 'Filters' section is partially visible, showing 'Campus' with options for ITE College Central (211), ITE College East (191), and ITE College West (181). The main content area shows '522 articles' and a featured article titled '3D Printing for Beginner' with filters for Campus (ITE College East), Industry (Others), Course type (Short Courses), and Certifications (Others).



Scan to find
out more!



POSITIVE IMPACT

ITE grads find doors to good jobs opening wider

Survey shows median pay more than doubled in 10 years; more grads also furthering studies

Sandra Davis
Straits Times Education
Correspondent

Median salary of \$1,200 when they left the ITE in 2007.
The top 10 per cent of ITE graduates drew \$3,500 a month and the top 25 per cent, \$3,000 - similar to the average pay of residents here.
Compared with those years when men went to work after secondary school, ITE grads were better off, the survey found. They earned \$400 more a month.
The survey also found that more than 10 per cent of ITE grads went on to study for

The ITE, which offers 97 full-time certificate courses and more 200 part-time courses, takes in about 14,000 students a year. The vast majority - 85 per cent - find their jobs completing their 3 years. About 15 per cent are O-level school leavers. The remainder are students progressing from Singapore's Higher Nite courses.

The latest graduate employment survey of students from the National University of Singapore, Nanyang Technological University and Singapore Management University showed that their median starting monthly salaries \$3,000 (US\$2,200).



ITE grad Alan Gek
has a career manager with
PND Insurance

Alan Gek said: "Clearly, an ITE education builds in one's students skills that enable them to access good jobs. It also provides them with a strong foundation to go on to further education at some point in their career."

and electrical engineering at the ITE, said his ITE training enabled him to gain a job in the IT field.
After working for several years, he went on to start a business company in his own right.

He recommended using and dedicating resources who trained them well. "The teachers really helped them build their confidence," he said.

ITE graduate Vikram Ganesan, 28, a user experience manager with PND Insurance, agreed that ITE opened doors to higher education and good jobs for him.

Mr Vikram, who was ITE in 2008 after completing a course in multimedia technology, went on to Temasek Polytechnic and then to SMU (University of Singapore) to complete a degree in communication design.

He credited ITE for moulding him into an independent and hands-on learner. "The polytechnic and then at university, I was ahead of the other students because of the industry-relevant and hands-on approach that ITE gave me," he said. "And ITE opened doors for me to the next

THE STRAITS TIMES

From ITE to NUS medicine: Ex-dropout makes the grade

23-year-old, who had quit secondary school, is first ITE grad to become medical student

David Lim
Straits Times Correspondent

He started his career at the National University of Singapore (NUS) as a medical student. He had quit secondary school at 15 and worked as a waiter for a year before returning to school to complete his O-levels.

He applied for the medical course at NUS and was accepted. He is now a medical student at NUS, having completed his O-levels and A-levels.

A different path to success



He started his career at the National University of Singapore (NUS) as a medical student. He had quit secondary school at 15 and worked as a waiter for a year before returning to school to complete his O-levels.

He applied for the medical course at NUS and was accepted. He is now a medical student at NUS, having completed his O-levels and A-levels.

He applied for the medical course at NUS and was accepted. He is now a medical student at NUS, having completed his O-levels and A-levels.

Girl wins gold in engineering category in skills competition in Singapore, first one to do so



Reshama Tan was a surprise winner in the traditional category in the information technology category.



DISCOVER ITE

Customer & Visitor Centres

ITE HQ & College Central

Address: Blk A, Level 2, 2 Ang Mo Kio Drive, Singapore 567720

Tel: 6590 2211

Email: college_central@ite.edu.sg

ITE College East

Address: Administration Block, Level 1, 10 Simei Ave, Singapore 486047

Tel: 6590 2262

Email: college_east@ite.edu.sg

ITE College West

Address: Blk 2, Level 2, 1 Choa Chu Kang Grove, Singapore 688236

Tel: 6590 2628

Email: college_west@ite.edu.sg

*All Centres are open from 8:30am – 6:00pm,
Mondays to Fridays (closed on Weekends and Public Holidays)

-  www.ite.edu.sg
-  facebook.com/ITESpore
-  instagram.com/itespore
-  tiktok.com/@itesingapore
-  youtube.com/itespore
-  x.com/ITESpore
-  linkedin.com/school/ite-spore

© Institute of Technical Education, Singapore (2026). All rights reserved. No part of this publication may be reproduced, distributed, stored in retrieval system, or transmitted in any form or by any means, including photocopying, recording or other electronic and mechanical methods, without the prior written permission of the Institute of Technical Education, Singapore.

